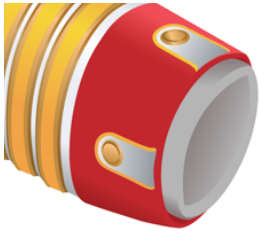


## IAN Officer Coat Cuffs



Canon - SITS 2

Prototype

There was a lot of talk with members of BuNine and TRMN costumers about how to streamline the VERY intricate cuff design you see from the SITS 2 manual (above left) and make it a little bit less complicated (see the prototype, above right). That said, it is still absolutely the most intricate part of not only the IAN officer uniform, but very likely any uniform in the TRMN.

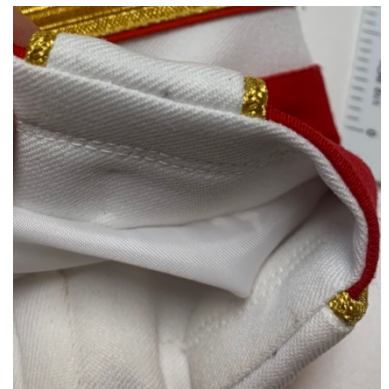


← To begin with the last 2.75 inches of the white jacket cuff is either replaced or covered over by scarlet (not red) fabric. It is recommended that you cut the length off from the white coat and replace it, but simply covering it is an option if tailoring skills are at a premium. You should make every effort to match the type of scarlet fabric to be the same as your coat (e.g., 100% poly twill, poly-cotton mix, etc.).



← There are four white foldbacks on each sleeve (8 total). These are 2.25 inches long ...

...though when you make them you → will want to make them at least a  $\frac{1}{2}$  -  $\frac{3}{4}$  of an inch longer so they you can fold the ends under and up into the sleeve.



← The foldbacks are 1.25 inches wide, though this includes the gold metallic piping that edges each foldback.



← There are a number of vendors that sell this type of metallic gold piping with white cloth backing. Buy a good length (2.5-3 yards) and then you can mass produce the eight foldbacks you'll need all at once.



You will also need 8 plain brass cuff → buttons. You can get these on Amazon or at many fabric stores.

**NOTE:** If you had to hem your pants, or cut off the white cuffs, or took external pockets off of your coat, you will have the material you'll need to make the foldbacks. Elsewise, you will have to match the texture and color of the white of the coat as closely as you can. Again, try to match the type of fabric as you did with the scarlet cuffs – this time in white.

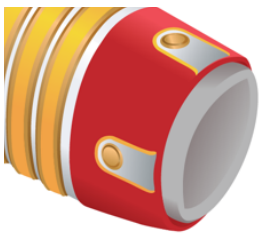


← Once you have the eight foldbacks made, you'll want to space them equidistantly around each cuff. Go to the inside seam of the sleeve and pace your first two tabs here with the seam running down the middle. You can then place the other two on the outer part of the cuff.

If you have spaced the foldbacks evenly around the cuff, then when → you are done you'll have something that looks a bit like this.



Admittedly, the cuffs we will be using are not an exact match of those depicted in the SITS 2 manual, but they are very, very close and maintain the spirit of the original artwork.



**Canon - SITS 2**



**Prototype**

## Special Note on Rank Stripes and Stars

Though we will discuss the various rank insignias, stars, stripes, etc. in another document, note should be taken here of their relationship to the cuffs.



← If you are going to be opening up the seam of the sleeves as you replace the white with the red material at the end of the cuff, this is the perfect opportunity to also 'tuck in' the ends of your rank stripes rather than having them overlap or hang out.



← You will also want to maintain a ½ inch spacing between the cuff, stripes, stars, etc.



← While junior and senior officers respectively use solid metallic silver and gold sleeve stripes, flag officers of F-2 and higher use a metallic stripe edged with red. As you can see, using the ¼ inch double fold bias tape from both the cap and coat works well here as well! 😊